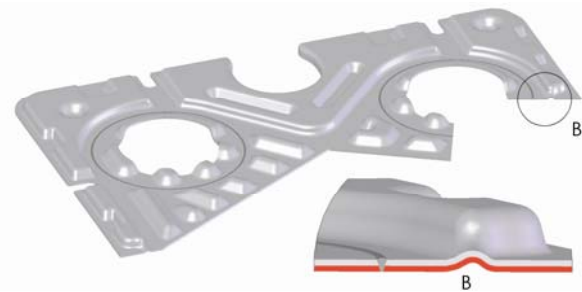
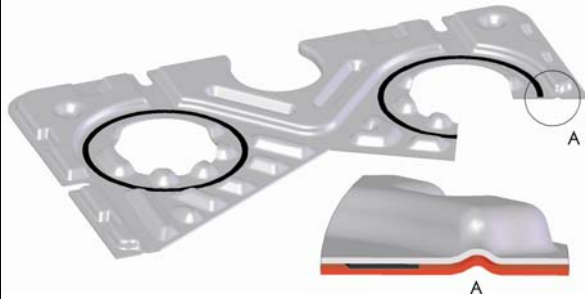
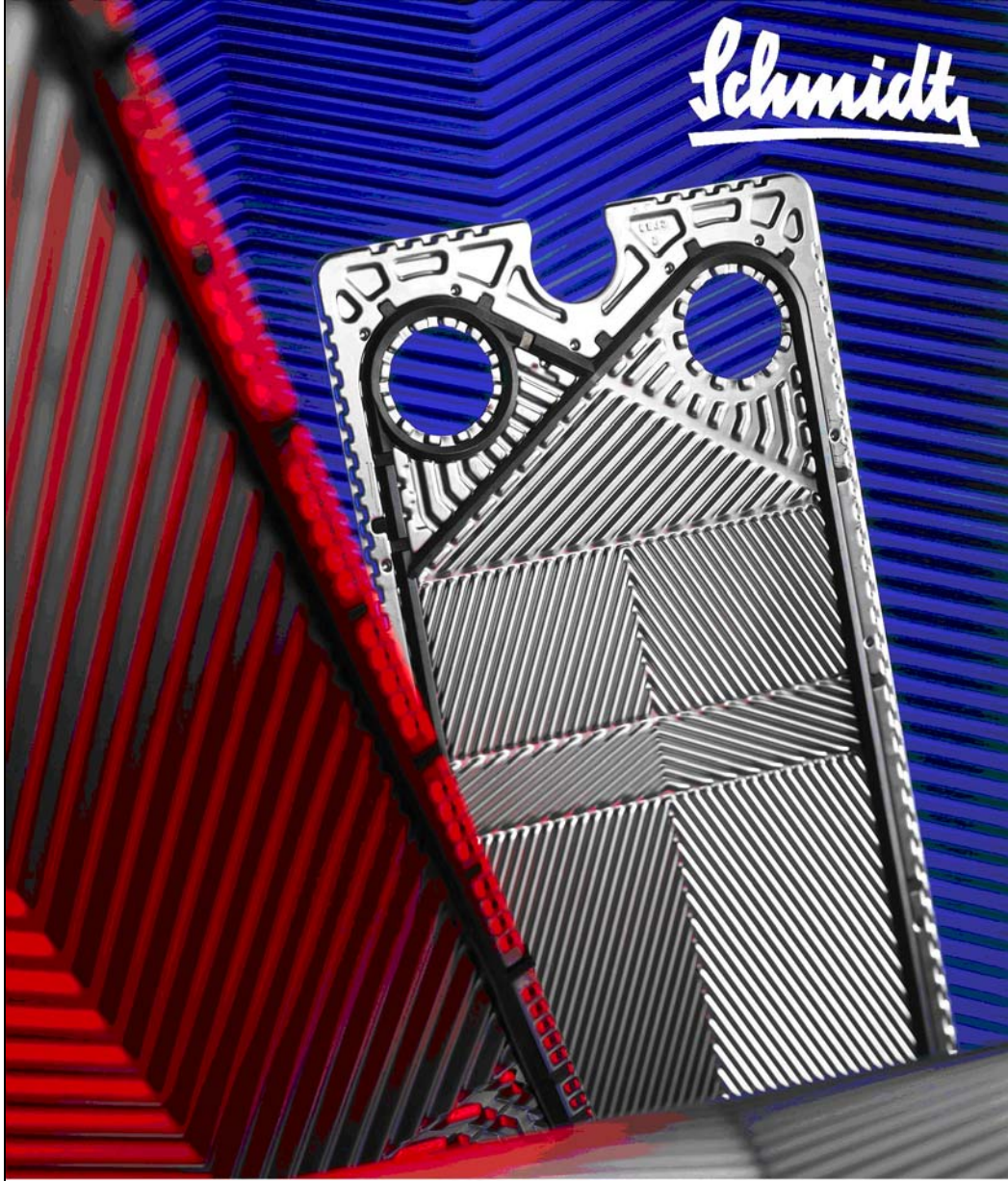


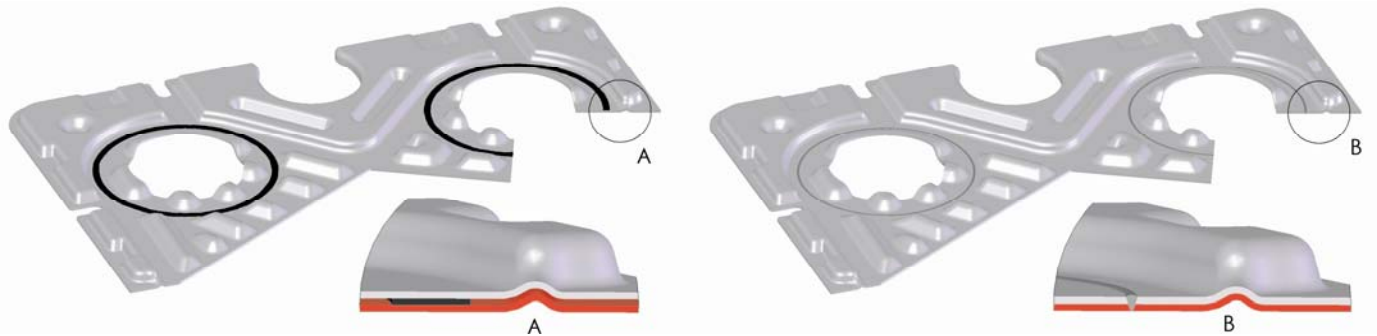
Schmidt



SIGMATWIN
DOUBLE-WALL
PLATE

API Heat Transfer
PERFORMANCE IS EVERYTHING

SIGMATWIN – Enhanced security in production processes.



with internal gaskets

with laser-weldings

We designed the SIGMATWIN double-wall plate to achieve the specific demands for a heat exchanger plate as a safety plate.

Construction and functional concept

- Instead of a single SIGMA plate we apply a SIGMATWIN plate pair, which has been moulded together and put into each other.
- The sealing of the gap is realised only in the section of the four holes either with laser-weldings or with flat ring gaskets.
- In case of a plate crack the leakage at first escapes into the gap between the two plates and then to the outside that a contamination of the media / products which are engaged in the heat transfer can be prevented.
- SIGMA plate heat exchangers equipped with SIGMATWIN double-wall plates can be opened like standard plate heat exchangers for inspection, or maintenance purposes. The gaps of the gasketed double-wall plate can be revised as well.

Available SIGMATWIN plates for the SIGMA-series

M 7 DW M 9 DW 26 DW 37 DW 66 DW
Applicable for volume flow rates up to 320 m³/h.

Plate thickness of the SIGMATWIN double-wall plates

2 x 0,3 mm or 2 x 0,4 mm

Applications

- Chemical industry (secondary circuits, safety systems, reactor coolant systems).
- Pharmazeutical industry (buffer tanks, infusion- and injection solutions).
- Oil cooling (compressors, hydraulic systems, turbine cooling, ...).
- Ultrapure water applications (for example in the semiconductor industry).
- Food and beverage industry (edible oil, mineral water, dairy, ...).

Materials

- Stainless steel 1.4404 and others.
- Elastomer gaskets NBR / EPDM / Viton (FDA-compliant).

02/2012